



# CEYLON WILD

## Fact Sheet

# CWS at a Glance

## Classification

**Tented Room**

**Opened**  
2018

**No. of Rooms**  
06 (Tents)

**Hot Line**  
+9477888 8689

**Email**  
info@ceylonwildsafaris.com

**Website**  
www.ceylonwildsafaris.com

**Mode of Transfers to CWS**  
Camp 4x4 Vehicle

**Maximum Room Occupancy**  
4Adults,2Adults+2Kids

**Bedding Arrangement**  
KingorTwin,King+Extra Bed

**Location**  
Southern Province, bordering the Western sector of Yala National Park

**Time Zone**  
GMT/UTC (UTC+05:30)

**Voltage**  
220 - 240 Volts AC

**Climate**  
Sri Lanka's tropical climate consists of distinct wet and dry seasons. The North East monsoon brings abundant rainfall to the country's Northern to South Eastern regions (including Yala) from November to March. Average annual temperature is 310 Celsius.

**Age Policy**  
02.00 - 11.11yrs Child  
12yrs + Adult

**Common Routes ETA**  
From Colombo  
Approx.4hrs 15mins(285 km)  
via Southern Expy/E01

From Ella  
Approx. 2 hrs 25 mins (95 km)  
via Wellawaya-Ella-Kumbalwela Hwy/A23 and Kataragama Rd

**Distance to Airport and ETA**  
Colombo Bandaranaike International Airport – 290 km (approx. 4 hrs 30 mins)

**Mattala Rajapaksa International Airport** – 41 km (approx. 1 hr)

**Check in**  
13:00hrs

**Check out**  
11:00hrs

**Baggage**  
Norestriction in weight or number of pieces (Try to minimize as much as possible)

**Meal Times**  
Breakfast:09:30hrs to 10:30hrs  
Lunch: 13:30hrs to 14:30hrs  
Dinner: 19:30hrs to 21:30hrs

**Safari Times**  
Morning: 05:30hrs to 09:00hrs  
Evening: 15:00hrs to 18:00hrs  
Night: 22:00hrs to 00:00hrs

## Dining and Bars

**Authentic Sri Lankan and Asian & Continental Cuisine (Fixed Menus)**  
**Fresh Fruits and Juice (Locally Source)**  
**Local and Foreign Beverages, Wine and Spirits**

## In Room Amenities

Air conditioning  
Wooden deck area  
Plunge pool  
King-size bed with duvet  
Bedside table  
Safety deposit box  
Dressing table  
Chic furnishing  
Utility wardrobe  
Luggage racks  
Towel racks  
Fresh linen  
Bathrobes & towels  
Toiletries  
Charging ports for phones and cameras  
Flush-able toilet  
Twin sink with hot and cold water  
Shower with hot and cold water  
Additional bed and/or baby cots on request  
Total tent floor space is 768 sq.ft including deck area

## Facilities at the Camp

Customised photographic safari vehicle  
Alfresco dining  
Open air lounge  
Wildlife book library  
Creative hub (photo editing and photo printing station)  
Binoculars  
Tripod, Monopod and Beanbags  
Torch/Flash light  
Umbrellas and Rain Ponchos

## Excursions

Guided Safaris to Yala  
Guided Safaris to Bundala and Udawalawa (On Request)  
Guided Photographic Safaris  
Guided Bird Watching  
Guided Bush Walks  
Visits to Situlpawwa Rock Temple  
Visits to Ruhunu Maha Kataragama Dewalaya  
Visits to Wadihiti Kanda

## Other Activity

Camp-fire nights  
Storytelling  
Children's wildlife education activities  
Presentations on Sri Lankan Wildlife  
Exclusive private dining

## Extras (Advance notice required)

Exclusive use of a safari vehicle with game ranger  
Guided Night Safaris

## Policy

No Loud Music  
No In-Room Dining  
No Smoking in the Room  
No Walking Outside of Camp Perimeter at Night  
No Physical or Vocal Interaction with Wildlife

## Conditions

Drivers/guides will not be accommodated at our campsites.  
Payments to be done 01 month prior to guest arrival.

# Who We Are

We are explorers, gifted with a thirst for adventure and governed by an ethical code. We are lovers of nature and the ways in which we are nurtured by it. Allow us to take you on a journey you will never forget. Our experience spans jungles from Africa to Asia. We are professionals who take great pleasure in what we do, and we would very much love to share our passion and our jungle home with you.

**Escape your busy lives and  
truly become one with nature...**



[Guided Jeep Safari](#)

[Guided Photographic Safari](#)

[Guided Night Safari](#)

[Guided Bird Watching](#)

[Guided Bush Walks](#)

[Visit to Archaeology Sites](#)



## What We Offer

**A tailor made experience to suit your needs and harmonize one's soul with true nature.**

The experiences for our guests are designed based on one's preferences and desires. Some enjoy the bugs and the birds while others prefer the big cats and the pachyderms.

Our experiences are all inclusive. We provide everything including accommodation, all meals and snacks, drinks from our well stocked bar, two game drives per day, national park fees and taxes.

The guiding team at Ceylon Wild Safaris are all experienced wildlife photographers. In pursuit of passion we would be happy to provide a customized experience for those in search of the perfect photographic opportunity.



# Our Camp

## What It's Like

The buffer-zone jungles of Yala National Park hold a secret which until now has been hidden, but we are ready to share this secret with you and this is none other than the Ceylon Wild Safaris campsite, nestled in the buffer zone forest that borders the national park our camp will transport you into a world unlike any other. The camp is a fusion of simplicity and wild luxury that has been woven seamlessly with the surrounding environment. Each of our six tents are spacious and comfortable providing the ultimate relaxation after a long day of safari. A highlight is the plunge pool in each tent which allows you to relax while watching the world go by here in the wild.

Our Yala camp is situated on land that was once used for farming, we have begun reforestation to bring the area back to its former splendor, all materials for the camp were sourced locally and we are proud to be the only 100% solar powered luxury camp on the island. This makes us one of the most sustainable wildlife outfits in the country.

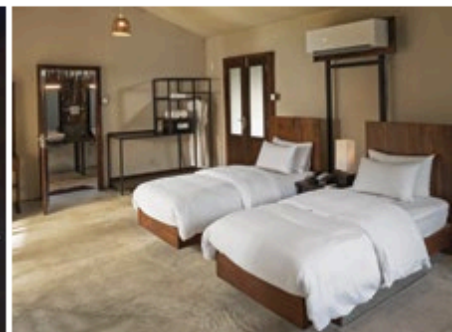
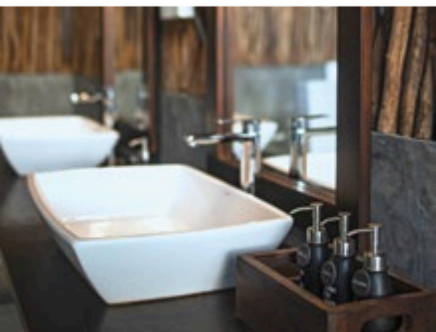


# Accommodation

CeylonWild SafarisCamp is a collection of six safari style canvas tents, spaciouly designed for two adults but can sleep three, with a child, if necessary. Positioned to provide a picturesque view of the 'Weda Siti Kanda' mountain and just adjoining the 'Kochichipathana' lake; the camp has an impressive array of glamping amenities:

- Customized tent with air conditioning
- Wooden deck area with private plunge pool
- King sized bed (can be arranged as a twin)
- Bedside table, dressing table and chic furnishing
- Utility wardrobe, luggage racks and towel racks
- Fresh linen, bathrobes, towels and toiletries
- Charging ports for phones and cameras
- En-suite flush-able toilet and twin sink within bathroom area of the tent
- En-suite shower with hot and cold water
- Additional bed and/or baby cots can be placed in the tent
- Total tent floor space is 768 sq.ft including deck area







# Facilities at the Camp

The camp is situated on an 18-acre plot of wilderness land but in order to reduce our footprint, we have spread the camp out over just 2 acres of which was previously used for farming. The camp has the following facilities to make your stay with us a memorable one.

- Customized photographic safari vehicles

- Alfresco dining

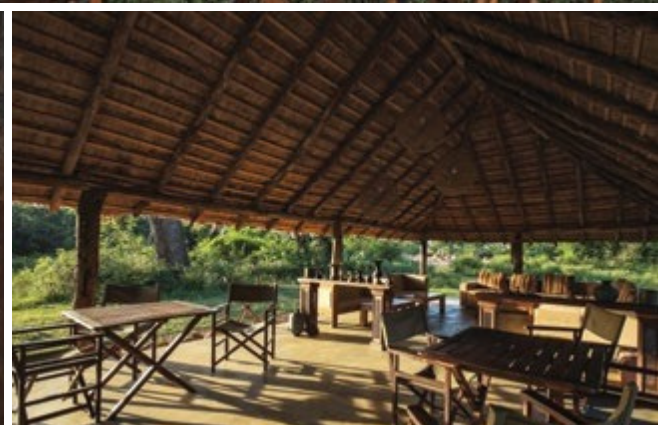
- Wildlife book library

- Creative hub (photo editing and photo printing station)

- Open air lounge

- Binoculars, Tripod, Monopod and Beanbags

- Torch/Flash light, Umbrellas and Rain Ponchos









# The Game Drive Experience

From the unfathomable color of the “Blue Mist” to the prowling of the Leopard, the stylish stillness of the Painted Stork to the charging of the Elephant, Yala National Park is full of fragrance and ferocity. Its savage secrets date back millions of years in geological history, and are woven into myths and legends of the ancient Kingdom of Ruhuna. Our guides will take you on a journey to translate the stories of this wilderness.

This is where the thrill of your stay with us truly begins.

**(Itinerary includes 2 safaris per day – accompanied by our professional field guides).**

# Photographic Safaris

We invite you to climb into our Land Cruiser, modified with removable seats and a forward folding windscreen, equipped with all your camera support needs. Our passionate photography guides will ensure that you achieve the best position for the ultimate wildlife shot, whilst also sharing photography tips and techniques. Ceylon Wild Safaris guide, Indika Nettigama, has been a professional wildlife photographer for over 2 decades and has instilled his passion across the fleet.





# Night Safari

As evening falls and the animals that have entertained us throughout the day find their resting place for the night, the more elusive, nocturnal creatures emerge from secrecy. With a spot-light guiding our movements, a night-drive takes us on a journey through what the wilderness becomes after dark.

**(Night Safaris require the care and ethics of trained professionals. We do not advise carrying out night-drives unless accompanied by professionals trained to do so)**

# Bush walks

The fragrance of wild flowers, the grains of sand pressed into the ground by the spoor of a leopard, the melodious call of an Asian paradise flycatcher, all fine details of nature that can only be interpreted by one on foot. Our rangers take you on a journey by educating you on the fine details that one cannot experience from a vehicle. When feet meet sand.



# Visit Situlpawwa Rock Temple

Being in the jungles of Sri Lanka is about more than the adventure of a safari, it's about absorbing the presence of its sacred antiquity. The ancient Sithulpowa temple sits immersed within the rocky outcrops of the jungles of Yala National Park and holds the visible and sensational history of the ancient kingdom of Ruhunu; dating back over 3,000 years. A sunrise-climb up these enchanting slopes, takes us on a spiritual trail through history.





## Creative Hub

An air-conditioned Creative Hub awaits you. This room known as the “guides’ passion room” is where our team carry out all sorts of wildlife related activities including photographic post-production, canvas printing and maintaining logs of wildlife sightings and leopard identification profiles. **The hub is equipped with the professional photo printer** and 27-inch iMac with the latest versions of popular editing software for viewing and editing your photographs taken on your safaris, for a **large format canvas print upon returning from safari and for you to take home as a personalized memory** to hang on your wall at home.

# Authentic Sri Lankan Food

We all have a perception of the diversity in the spread of Sri Lankan cuisine; the spices, fresh produce, various combinations of local flavours. "Authenticity" comes from making it our own.

The kitchen at Ceylon Wild Safaris, like our ethos, is not one of commercial interpretation but one of comfort; coupling the essence and origin of traditional Sri Lankan flavours with the intimacy of cooking at home.





# Exclusive Private Dining

Traditional cuisine is an enchantment, but served with the right ambience makes all the difference. A starry night sky and a crackling bon-fire makes for the perfect dining experience that will be printed on memory.



## Take a walk on the wild side...

We invite you to explore and discover Sri Lanka's highly diversified wildlife, including leopards, elephants, bears, botany, entomology, as well as some of the world's best bird watching sights on this island with Ceylon Wild Safaris.

**Call us on +94 76 919 2021 or  
Email [sales@ceylonwildsafaris.com](mailto:sales@ceylonwildsafaris.com)  
for more information and rates.**

CEYLON  
WILD

[www.ceylonwildsafaris.com](http://www.ceylonwildsafaris.com)